



The Original
MIPOLAM 1937

Mipolam[®] Troplan Plus
Mipolam[®] 托普兰加强

Gerflor[®]

Performances and benefits 产品表现



Available in 2 m sheet
可供2米宽卷材



Matt finish surface: enhanced design & colour
哑光表面, 增强设计感, 让图案和花色更持久



Flexible flooring, easy to install & weld
高弹性同质透心地, 安装便捷



Homogeneous vinyl flooring suitable for medium to heavy duty traffic areas
在超大人流量区域保证地板的卓越表现



Directional design available in 30 references
18 个花色可供选择

LOW VOC EMISSION, GOOD INDOOR AIR QUALITY 低VOC排放, 良好的室内空气质量



成份

- 100%符合REACH规定
- 不含甲醛
- 不含重金属
- 不含溶剂



健康

- 健康
- 有效抑菌(抑菌率>99%)
- 安全性
- 出色的防滑性能
- 舒适
- 脚感舒适



回收物质含量

- 25%回收物质含量
- 回收物质100%符合REACH要求



可循环

- 产品100%可回收



室内空气质量

- 28天后 TVOC 排放<10µg/m³, 低于标准100倍。
- Floorscore 认证
- 符合 AgBB 规定
- 不含甲醛



LCA

- 采用产品的生命周期分析模型, 进行专属的生态概念设计
- 工厂通过ISO 14001认证
- 助力于众多绿色建筑认证 (LEED,HQE,BREEAM...)
- 出色的特殊维护处理, 以通过大幅度减少化学清洁剂以及水的消耗, 来保障对环境最低的影响。

INSTALLATION 安装

Installation should be carried out in accordance with local standards. Subfloor should be smooth, hard, clean and dry prior to laying. Where applicable the subfloor must incorporate an effective Damp Proof Membrane. The material must be allowed to acclimatize 24 hours before installation in a room temperature of between 18-24°C. All seams must be hot welded using Gerflor® matching welding rod. 应按照当地标准进行安装。铺设地板前, 应确保地面平滑、坚硬、清洁和干燥。如有需要, 应在地面上铺设一层有效的防潮薄膜。安装地板前, 应提前24小时将地板材料放置在18-24°C室温内适应环境。所有接缝应选用Gerflor®之配套焊条热焊处理。

MAINTENANCE 维护

No emulsion dressing is required. Maintenance should be carried out regularly to retain in the appearance and durability of the floor. The floorcovering should be maintained with regular sweeping and damp mopping using a neutral cleanser. More intense cleaning should be carried out using a fine spray cleaning pad under a floor machine, or for larger areas combined machine cleaning. 铺装之后终生无需打蜡。定期进行维护以使其保持外观整洁和耐用。定期清扫和使用中性清洁剂湿擦来维护地板。或者使用具有精细喷雾垫的清洗机进行大面积地面的清洗。

Mipolam® Troplan Plus / 托普兰加强



34-43

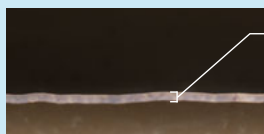
evercare™ SPECIAL MAINTENANCE TREATMENT

THE PATENTED TECHNOLOGY BY GERFLOR®
EVERCARE™ 特殊维护处理, 特有的GERFLOR®专利技术

THE EXCELLENT CHEMICAL STAIN RESISTANCE SPECIAL MAINTENANCE TREATMENT 优异的抗化学性特殊维护处理

evercare™ BY GERFLOR®: Treatment durability

Gerflor® 处理技术: 持久性处理技术

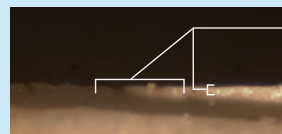


Gerflor®: Even thickness
Gerflor®: 厚度均匀



100% non-porous surface
Water-repellent effect
100% 无孔隙, 有效防止
水渗漏

Other non-treated floor covering 其它表面处理的产品



Missing treatment and
uneven thickness
竞争对手: 未经处理
厚度不均匀

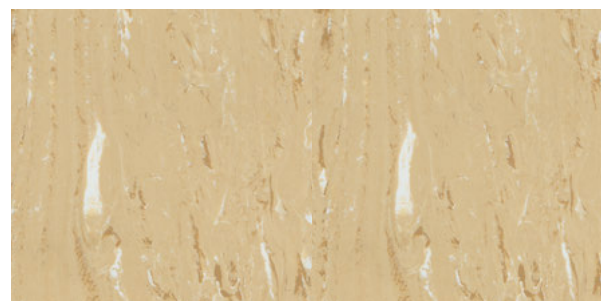


Non-treated product
无处理产品

SIMPLE & EASY STAIN REMOVAL 易于去除污渍



1003 Light Ocre



1035 Ocre



1032 Yellow



Compact sheet, without foam backing 致密卷材, 无泡沫背层



1002 Beige



1010 Grey



1004 Earth



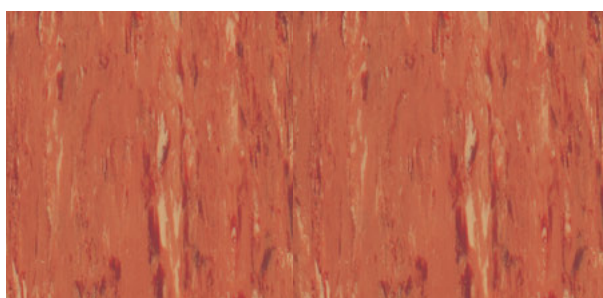
1059 Blue Grey



1033 Brown



1040 Dark Grey



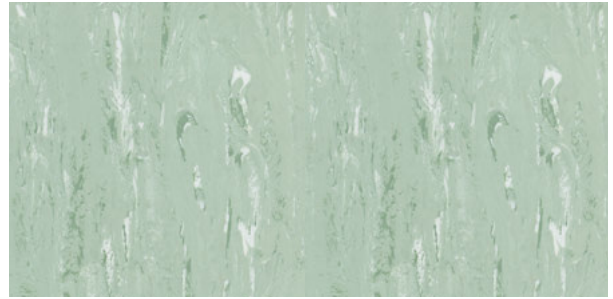
1055 Apricot



1060 Anthracite



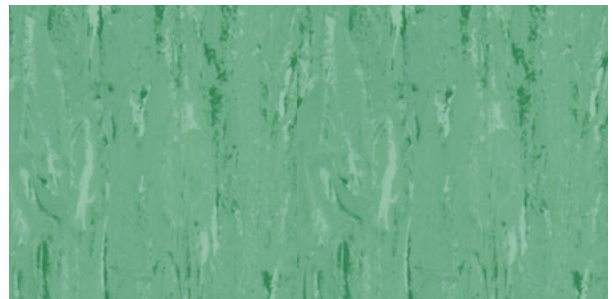
1009 Light Grey



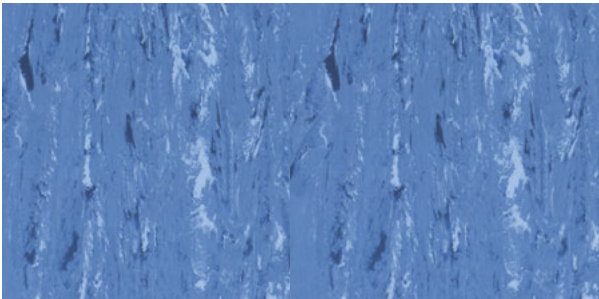
1007 Green



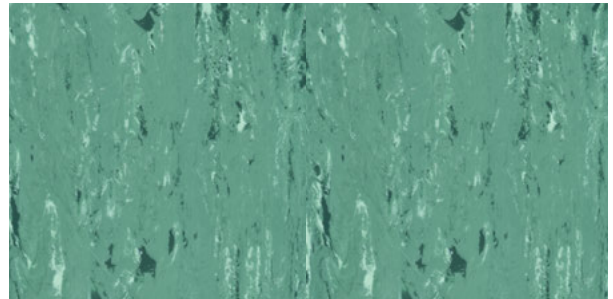
1006 Blue



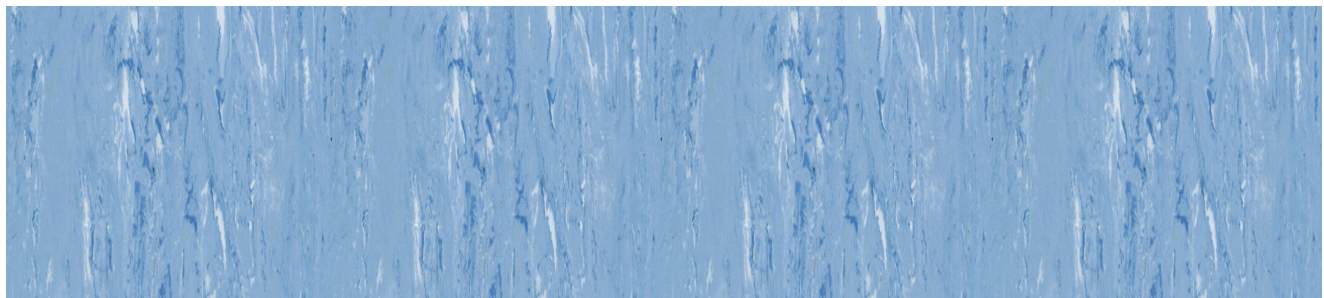
1037 Medium Green



1056 Dark Blue



1057 Dark Green



1036 Medium Blue



Mipolam® Troplan Plus / 托普兰加强

DESCRIPTION 规格

Total thickness 总厚度	ISO 24346 (EN 428)	mm	2
Width of sheet 卷宽	ISO 24341 (EN 426)	cm	200
Length of sheet 卷长	ISO 24341 (EN 426)	lm	20

CLASSIFICATION 类别

Norm / Product specification 产品规范	-	-	ISO 10581(EN 649)
European classification 产品分级	ISO 10874 (EN 685)	class	34 - 43
Fire rating 防火等级	EN 13 501-1	class	Bfl-s1
	GB 8624 - 2012	-	B1(B-s1,t0)
Toxic testing 有毒有害物质检测	GB 18586-2001	-	合格
Static electrical propensity 抗静电性	EN 1815	KV	< 2
Electrical resistance 抗电阻性	EN 1081	Ω	> 10 ⁹
Slip resistance dry 防干滑性	EN 13893	-	≥0.3
Slip resistance wet 防湿滑性	DIN EN 16165	class	R9

PERFORMANCES 性能

Type binder content 粘合剂分级	ISO 10581	type	II
Dimensional stability 尺寸稳定性	ISO 23999 (EN 434)	%	≤ 0.4
Castor chair test 椅子脚轮测试	ISO 4918 (EN 425)	-	OK
Thermal conductivity 热传导性	ISO 10456 (EN 12524)	W/(m.K)	0.25
Colour fastness 颜色稳定性	ISO 105 - B02	degree	≥ 6
Chemical products resistance 抗化学性	ISO 26987 (EN 423)	-	OK
Anti-bacterial activity 抑菌性能 (E.coli - S.aureus 大肠杆菌和金黄色葡萄球菌) (1)	ISO 22196	-	> 99% 抑菌率
Antiviral activity (human coronavirus 229E) 抗病毒活性 (人类冠状病毒229E)	ISO 21702	-	99.7% (2小时)
Special maintenance treatment 特殊维护处理	-	-	EVERCARE™
Color number 颜色数量	-	-	18

ENVIRONMENT / INDOOR AIR QUALITY 环保 / 室内空气质量

TVOC after 28 days 28天后TVOC(2)排放量	ISO 16000 - 6	µg/m ³	< 10
Certification 证书	-	-	Floorscore®

CE MARKING CE标志

CE	EN 14041	-	
----	----------	---	--

(1) The implementation of an effective cleaning regime is the most important defence against infections. 实施有效的清洁方法是抗感染最重要的防御措施。
(2) TVOC:挥发性有机化合物总排放量

MIPOLAM® TROPLAN PLUS is a vinyl flooring homogeneous calendared and pressed in 2m sheets, with a thickness of 2mm. The directional design with colour throughout the 2mm thickness. This flooring is suitable for medium to high traffic areas, and facilitates floor-wall junctions, angles and welding treatments. The flooring is equipped with Evercare™, patented special maintenance treatment obtained by UV laser cross-linking offering the best chemical resistance to the main products used in healthcare environment. According to ISO 21702, **Mipolam® Troplan Plus** has anti-viral activity against Human Coronaviruses : it reduces the number of virus by 99,7% after 2h. TVOC emissions after 28 days (ISO 16000-6) are below detection levels with <10 µg / m³ and this product is classified A + (the best class). It's 100% recyclable.

MIPOLAM® 托普兰加强 是一种经过加压处理的同质透心卷材地板, 有方向性设计, 其彩色碎片与天然混合物经过特别处理后均匀的分布在地板内, 加上其色彩丰富, 适合多方面的设计。其表面经过加压/加密度处理后达到持久耐用和容易保养的效果。采用 Evercare™ 特殊维护处理, 提供了卓越的抗刮痕性和耐化学物质性能 (比如抗碘酒污染), 堪称目前同质透心地板工艺中的翘楚。铺装后终生无需打蜡! 根据ISO 21702 抗病毒活性 (人类冠状病毒229E), 2小时可减少细菌活性99.7%。室内空气质量, 28天后TVOC排放量<10ug/m³, 低于法国A+标准100倍。



随时找到 Gerflor®



请微信扫码, 关注Gerflor®

We care / We act Our Commitments for a Sustainable future

<p>CARBON FOOTPRINT* 碳足迹*</p> <p>2020年至2025年间 二氧化碳当量/平方米 -20% (公斤)</p>	<p>BIOSOURCED CONTENT*** 生物基成分***</p> <p>2025年达到 10%</p>	<p>RECYCLED CONTENT 循环再生成分</p> <p>2025年达到 30%</p>	<p>ADHESIVE FREE** 免胶产品**</p> <p>2025年达到 35%</p>	<p>ANNUAL VOLUME RECYCLED 年回收量</p> <p>2025年达到 60,000吨</p>
---	---	--	---	--

* 温室气体核算体系 (GHG) 中界定的范围 1 和 2 **使用免胶产品的业务占比 ***使用生物基产品的业务占比

Gerflor 洁弗乐™

GERFLOR CHINA

SHANGHAI BRANCH 上海分公司 Tel. / 电话: +86-21-63578818

BEIJING BRANCH 北京分公司 Tel. / 电话: +86-10-65836986